

Euboea *Εύβοια*

The Greek island to discover

*Also in
German text version
available*

Photographer, Author: Christoph Werr

English edition: ISBN: 978-3-9505080-1-7

German edition ISBN: 978-3-9505080-0-0

Format: 240 x 225 mm, high quality hard cover

Topic: For many, the second largest Greek island of Euboea is largely unknown. It lies in the shadow of the famous islands like Crete or Santorini. But Euboea is no less interesting for that. interesting. Only 1.5 hours away from Athens airport, individual travellers can experience the authentic Greece.

Euboea from north to south, from west and east, incl. the associated district island Skyros

Contents 212 pages in colour, text and approx. 380 photos. Illustrated book with information, descriptions, sport, hiking and cycling tips and beautiful landscape photos of the whole island.

The book covers everything from stunning beaches to hidden historical gems.

It's perfect for all the travel-curious and adventure-seeking.

Overview map with content notes

Target group: People who do not know Euboea, who are looking for tranquillity and variety with mountains and sea and who want to get to know the original.

Price: 36.90 AUT incl. VAT plus possible delivery costs.

Delivery: Can be ordered through bookshops and online shops. **As well as directly www.dialogconsult.org**

This book is meant to be an inspiration, to encourage individual discovery.



Euboea *Εύβοια* *The Greek Island to Discover*



Fotograf, Author: Christoph Werr, born 51, has been himself for 50 years. Creative, publisher, printer, photographer

© DialogConsult Christoph Werr
www.dialogconsult.org
info@dialogconsult.org

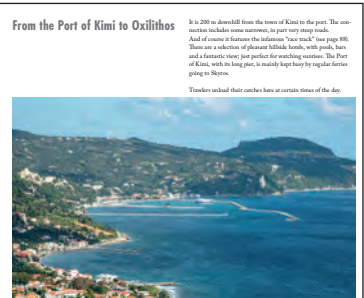
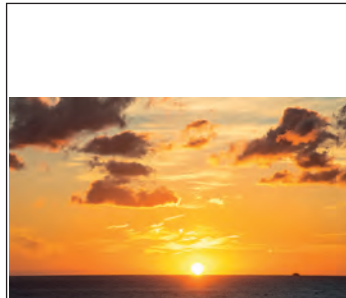
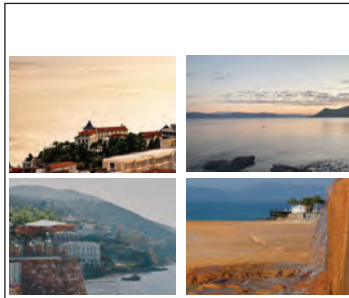
Neualmerstraße 6/19 5400 Hallein/Österreich
Telefon: +43 664 3867500

UID: ATU38077406 *Das Werk, einschließlich seiner Teile, ist urheberrechtlich geschützt.*



Loutra Edipsos ein Jungbrunnen

Die Katakomben Loutra Edipsos in im Nordwesten des Insel Von Ferkolou von Adria liegt hier die Fähr an.
Es ist nicht ohne das Zittern Rattensch der Welt und es sich zu den unheimlichen Hüllkaren Grottenhöhlen. Nur der Aetide haben hier die Menschen, Marii Nord und Konstantin der Große waren auch schon auf Kist.

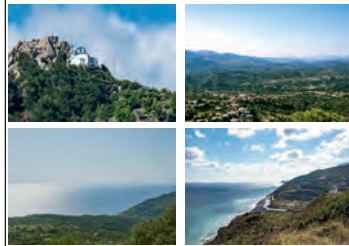


From the Port of Kimi to Oxilithos

It is 200 m downhill from the town of Kimi to the port. The connection includes some narrow, in part very steep roads. A lot of houses in the town of Oxilithos "see west" over the sea. There are a selection of pleasant little hotels, with pools, bars and a historic view just perfect for watching yachts. The Port of Kimi, with its long pier, is mainly kept busy by regular ferries going to Syros.
Travelers check their catches here at certain times of the day.

At the peak of the forest volcano, above the tranquil mountains of the Oxilithos, which is located at 200 m, which can be seen from afar. The fantastic panoramic view is very attractive here. In the village itself you will find nearly everything, including a bakery, supermarket, cafe and restaurant.

If you travel via mountain bike, expect inclines of up to 20 percent from Syros.
On the way back, you will find many small trails for cycling, all of which hardly have any traffic. The near via Parnassos is especially beautiful.



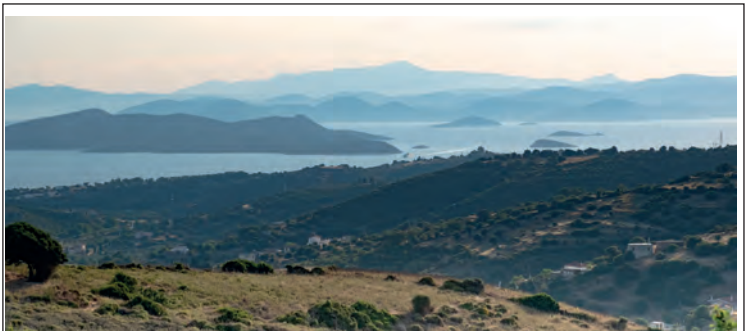
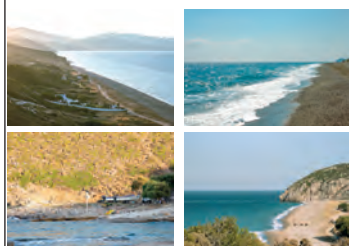
To the Manika-Waterfall

Manika-Waterfall is a hidden paradise. It is located near Manika village and a gem of Euboea. Also interesting are the findings from the settlement and cemetery of Manika (2000 - 1000 BC), which are displayed in the Chalkida Archaeological Museum.

The mountain bike route started from Kimi via Parnassos and Syros beach. A more pleasant way to find the way along leads directly to Manika, in the direction of Kimi.
Turn left before Neochori and continue on the same road, which leads to an altitude of about 200 m and is pleasant to ride along with very little traffic, to the village of Manika.
There are also very exciting climbing opportunities along the walls around Manika. Greek climbers discovered this a few years ago and created a number of climbing routes.
The summit of Manika - Viti - Kimi, founded an association called the "Manika Project".



Along the six kilometers of coastline from Cape Chelmos that reach the island to Kimi, you will find long, white sandy beaches, such as those of Makrotas, Kalami and Mavrotas. Finally, Paralia Oxilithos and Syros Beach, which you can only take in from the north, as the road from the north was taken over by the waves.
You will always find what you are looking for: Diversed, wild and beautiful beaches or grassed beaches with sun beds, umbrellas and tavernas.
Crystal clear waters and gorgeous views that are sometimes calm and always beautiful.



Directly below the summit 1379 m is one of the well-preserved Hellenistic ruins. According to mythology, the emperor Zeno was hit with lightning on the summit of this mountain. That is why this ancient house is sometimes called the "Temple of Zeus".
On the path just before it is the small church of Profitis Elias, which is hardly distinguishable from the rocks around it.



The whitewashed houses and narrow streets are charming and give you a glimpse into the past, making them an ideal place to stay. The street leads to Karra, a former site complex where the origin is an Acropolis from the 4th century BC.
Chalkida is considered to be one of the most beautiful villages in the Aegean and is therefore well-visited by tourists.
There are a number of small boutiques, pubs, restaurants and cafes.

